

# \$559,000

# mikegreerhomes

## Yaldhurst

Lot 4 Sir John McKenzie Ave - Yaldhurst Park



# for sale

dwelling size

150 m<sup>2</sup>

section size

363 m<sup>2</sup>

homes  
for  
sale

Offering three double bedrooms and an open plan living, kitchen and dining area, this home is perfectly designed to maximise space and indoor/outdoor flow. The home features an internal access double garage and a fully landscaped private section perfect for entertaining.

Complementing the living and bedroom spaces are the family bathroom and ensuite that are both well-appointed with quality fixtures and fittings.

Conveniently located a short five-minute drive from Christchurch Airport, 15 minutes from Riccarton Mall, and is close to New Zealand's largest secondary school Burnside High. a short walk away offers a range of cafes, restaurants, and services. Being situated off Yaldhurst Road, allows a direct get-away out of Christchurch to the myriad of ski fields located west of Christchurch, to fishing and boating rivers, and numerous other recreational reserves, and is the ideal setting for anyone who loves to be surrounded by nature.

### more features.

- + Fairview Architectural Suite Windows
- + Godfrey Hirst Flooring
- + Open Plan Living
- + Smeg Appliances
- + European Tapware
- + Tiled Shower






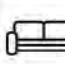

Turn Key

Auckland • Hamilton • Tauranga • Marlborough • Nelson • West Coast • Canterbury • Central Otago

bringing you **more.**

03 354 0166 [mikegreerhomes.co.nz](http://mikegreerhomes.co.nz)

# Yaldhurst Park Lot 4 Sir John McKenzie Ave - Yaldhurst Park

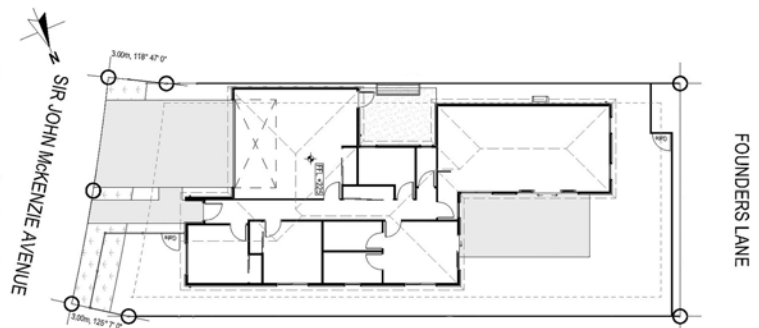
dwelling size	section size	3	2	2	1	2
150 m <sup>2</sup>	363 m <sup>2</sup>					



**+** **Free Design**  
With over 700 base plans you may be looking at the one that's absolutely perfect for you, or you may wish to modify it to make it your own. Our highly experienced team of in-house designers can customise each plan to suit your individual site, budget and style.

**+** **Specifications**  
Our wide array of specifications is where your home truly comes to life. Choose from a range of fixtures and fittings from today's most reputable brands. Let your imagination run wild or if you prefer we can suggest options to suit your needs and style.

**+** **Quality Assurance**  
Our reputation for quality is as important to us as it is to you. With 25 years of award-winning experience, a team of fully qualified contractors, and a comprehensive Quality Assurance programme, you can trust that your home is constructed with care and professionalism.



**Disclaimer** While every reasonable effort has been made by Mike Greer Homes to ensure the information correctly illustrates the dwelling and section, this material may only be used by the Purchaser for illustrative and guidance purposes. Mike Greer Homes accepts no responsibility for any differences, errors or omissions which may become apparent during or on completion of the dwelling.